

Fifty

Stile allo stato puro

Sheer style
Style à l'état pur

The Lucci and Orlandini studio and their creativity developed Fifty. This armchair in a refined, essential style, expresses timeless elegance. Fifty boasts contemporary lines and prized materials. In its construction, we have included side profiles in polished aluminium, and it is covered in leather or mesh fabric. Internally, it has "Synchromet" adjustment mechanism that adapt automatically to the user's weight and size. It features a lumbar support adjustable in height and depth. The base is on castors and can either match the polished aluminium frame or be in plastic. The armrests are also in polished aluminium.

Fifty naît de la créativité du bureau Lucci et Orlandini: un fauteuil au design raffiné et essentiel qui exprime une élégance intemporelle. Fifty se différencie par ses lignes contemporaines et par la recherche des matériaux: ses caractéristiques de construction comprennent des profils latéraux en aluminium poli, le revêtement est en cuir ou en maille. Il comporte un mécanisme de réglage "Synchro" qui s'adapte automatiquement au poids et à la corpulence de l'utilisateur. Il dispose d'un réglage lombaire en hauteur et en profondeur. La base sur roulettes peut être coordonnée avec la structure en aluminium poli ou en matière plastique. Les accoudoirs sont eux aussi en aluminium poli.



Dalla creatività dello studio Lucci e Orlandini nasce Fifty: la poltrona dal design raffinato ed essenziale che esprime un'eleganza senza tempo. Fifty si distingue per le sue linee contemporanee e per la ricercatezza dei suoi materiali; le sue caratteristiche costruttive prevedono profili laterali in alluminio lucidato, il rivestimento è in pelle o in rete. Al suo interno troviamo un meccanismo di regolazione "Synchro" che si adegua automaticamente al peso e alla corporatura dell'utilizzatore. Dispone di regolazione lombare in altezza e in profondità. La base su ruote può essere coordinata con la struttura in alluminio lucidato oppure in materiale plastico, anche i braccioli sono in alluminio lucidato.

Fifty



Braccioli in pressofusione di alluminio spazzolato con rivestimento in poliuretano

The armrests are made of pressure-cast aluminium with a polyurethane covering
Les accoudoirs sont en moulage aluminium sous pression revêtu en polyuréthane



Poggiatesta e appendiabiti
Headrest and coat hanger
Appui-tête et penderie



Supporto lombare
Lumbar support
Support lombaire

Caratteristiche tecniche

Technical features
Caractéristiques techniques



Movimento sincronizzato sedile/schienale

Synchronised seat/backrest movement
Mouvement synchronisé siège/dossier



Elevazione in altezza della seduta, pistone a gas cromato con escursione di 11 cm

Chrome gas lift adjustable seat height with a range of 11 cm
Élévation du fauteuil, piston à gaz chromé avec une course de 11 cm

Supporti sedile e schienale in alluminio pressofuso spazzolato, struttura interna in materiale plastico per schienale e sedile. I rivestimenti del sedile e del retro dello schienale sono in canvas, imbottitura in schiumato con rivestimento in pelle o in rete. Supporto lombare regolabile in altezza e profondità. Movimento: Meccanismo Synchronet con meccanica "ad effetto punto". Cinque posizioni di blocco e sistema antiritorno dello schienale. Elevazione mediante pistone a gas. Per sedute fisse: base in acciaio saldato e cromato a 4 razze con piedini di regolazione +/- 1 cm.

Seat and backrest frames in brushed diecast aluminium, the internal frames of both backrest and seat are in plastic. The seat and the back of the backrest are covered in canvas, and the chair is upholstered in foam and covered in leather or mesh fabric. Lumbar support adjustable in height and depth. Movement: Synchronet "point effect" mechanism. Five locking positions and non-return safety system for the backrest. Equipped with gas strut to regulate height. For fixed seats: base in welded chrome-plated aluminium with adjustable feet ± 1 cm.

Supports de l'assise et du dossier en aluminium moulé sous pression brossé, structure interne en matière plastique pour dossier et assise. Les revêtements de l'assise et du dos du dossier sont en toile, rembourrage en mousse avec revêtement en cuir ou en maille. Support lombaire réglable en hauteur et en profondeur. Mouvement: Mécanisme Synchronet avec mécanique "effet point" du point d'appui central. Cinq positions de blocage et système anti-retour du dossier. Levage au moyen d'un piston à gaz. Pour assises fixes: base en acier soudé et chromé à 4 rayons avec pieds de réglage +/- 1 cm.

Finiture basi

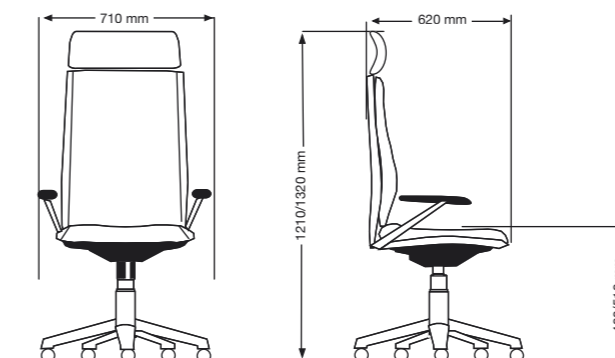
Bases finishes
Bases de finition



Basamenti in alluminio lucidato
Base in polished aluminium
Piètements en aluminium poli

Dimensioni

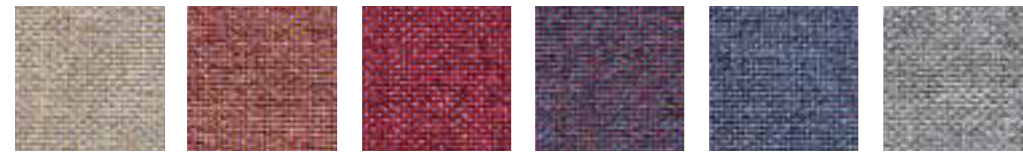
Dimensions
Dimensions



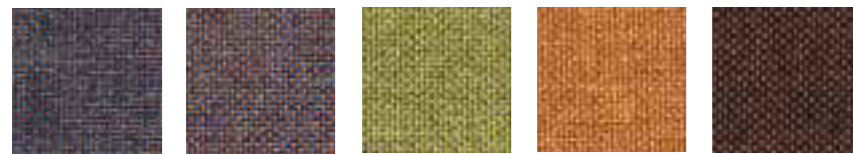
I Tessuti

The Fabrics
Les Tissus

CAT. E_ 300_Dynamica_Spot_Twenty_FreeNet_Chorus_Lounge_Airport_Lounge Sofà_Relaxed_A300



EA EB EC ED EE EF



EG EH EL EM EN

Composizione - Composition - Composition: 100% Poliestere Trevira CS
Peso - Weight - Poids: 350g/ml - 250g/mq
Resist. Superficie (Pilling) - Surface resistance - Résistance de la surface:
 5* - 2.000 cicli (ISO 12945 -2/00)
Resist. all'abrasione (Martindale) - Abrasion proof - Résistance à l'abrasion: 70.000 Cicli (ISO 12947/2)
Resist. Superficie (Pilling) - Surface resistance - Résistance de la surface:
 6** - Scala dei blu (ISO 105B02)
Reazione al fuoco - Flammability - Réaction au feu:
 C1 _ CRIB 5 _ M1 _ B1 _ EN 1021/1-2 _ BS 7176 MH
 NF D 60013 (AM18) _ IMO A 652 (16)

* min 4 max 5 - ** min 5/max 8

Manutenzione e lavaggio - Cleaning and washing - Entretien et nettoyage



Le Reti

The Nets
Les Resilles

SPOT_FREENET



N

FIFTY



HR

TWENTY



N



G

TWENTY_300_DYNAMICA_SPOT_FREENET (300, Dynamica, Spot and FreeNet only HN)



HN

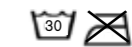


HG

Composizione - Composition - Composition: 100% Polyester

Omologazioni fuoco - Flammability test - Ref.: California Technical Bulletin No. 117-2000, Section E, Part I, Upholstery fabrics. DNI - Class 1

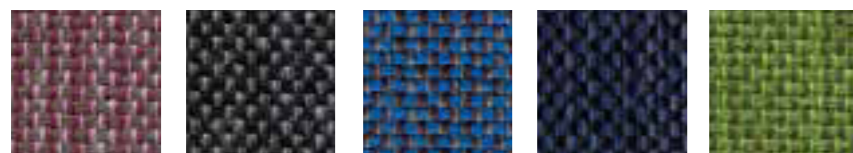
Manutenzione e lavaggio - Cleaning and washing - Entretien et nettoyage



CAT. G_ Dynamica_Spot_Twenty_FreeNet_Chorus_Lounge_Airport_Lounge Sofà_Relaxed_A300



GA GB GQ GD GC GE



GF GG GH GL GM

Composizione - Composition - Composition: 100% polyester trevira CS
Peso - Weight - Poids: 590g/ml 420g/mq
Resist. all'abrasione (Martindale) - Abrasion proof - Résistance à l'abrasion: 100.000 cicli (UNI EN ISO 12947-2)
Resist. Superficie (Pilling) - Surface resistance - Résistance de la surface:
 5* - 2.000 cicli (ISO 12945 -2/00)
Solidità alla luce - Light fastness - Solidité à la lumière:
 6** - Scala dei blu (ISO 105B02)
Reazione al fuoco - Flammability - Réaction au feu:
 C1 _ CRIB 5 _ M1 _ B1 _ EN 1021/1-2 _ BS 7176 MH
 NF D 60013 (AM18) _ IMO A 652 (16)

* min 4 max 5 - ** min 5/max 8

Manutenzione e lavaggio - Cleaning and washing - Entretien et nettoyage



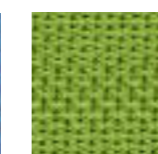
ELEMENTS



A Oro
Gold
Or



B Aria
Air
Air



K Bosco
Leaf
Arbre



M Magma
Magma
Magma



N Terra
Earth
Terre

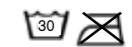


R Fuoco
Fire
Fire

Composizione - Composition - Composition: 100% Poliestere

Omologazioni fuoco - Flammability test - Ref.: California Technical Bulletin No. 117-2000, Section E, Part I, Upholstery fabrics. DNI - Class 1

Manutenzione e lavaggio - Cleaning and washing - Entretien et nettoyage



Finiture schienali
La finitura del sedile è sempre Nero (N)

Backrest finishes
The finishing of the seat is always Black (N)

Finitions dossiers
La finition de l'assise est toujours Noire (N)

Le Materie Plastiche

The Plastics
Les Matières Plastiques

DESIDERIA



XA XC XD



XF XV XX

CHORUS



XY XB XT XV XA

SLICK

scocca seduta - seated body - corps assis



XS XR XQ XC XN



XV XA

Composizione - scocca in polipropilene lucido - shiny polypropylene shell - coque en polypropylène brillante

Composizione - scocca in polipropilene - polypropylene shell - coque en polypropylène

Composizione - scocca in polipropilene caricato con fibra di vetro - polypropylene charged glass fiber - propylène chargé fibre de verre

Finitura - opaca - matt - opaque

carter di copertura inferiore
lower cover carter - couvercle inférieur



XV XP XA

Le Pelli

The Leathers
Les Cuirs

CAT. P_ Tao_Twenty_FreeNet_Boss_Relaxed_Lounge_Airport_Lounge Sofà _A300 (Fifty_A100_only P1)



P1 P2 P3 P4 P5



P6 P7 P8 P9 PQ PB only A300

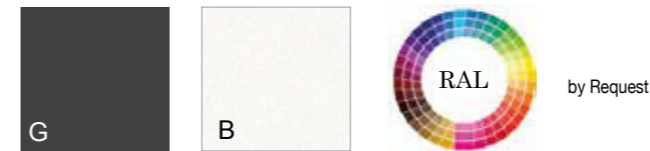
Composizione - Composition - Composition: vera pelle "pieno fiore" - real "full grained" - cuir véritable "plein fleur"
Peso - Weight - Poids: 870 gr/mq (UNI 5114)

Composizione PB Composition PB Composition PB: fronte disponibile SOLO in pelle nera P1, rivestimento posteriore e particolari in cotone e PVC nero (50% pelle - 50% PVC) - front available ONLY in black leather P1, back and details are cotton and black PVC (50% leather - 50% PVC) - devant disponible SOULEMENT en cuir noir P1, derrière et détails en coton et PVC noir (50% cuir - 50% PVC)

Manutenzione e lavaggio - Cleaning and washing
Entretien et nettoyage



TAO_ Schienale e impunture_back and stitching_dos et coutures



G Antracite
Charle
Anthracite

B Bianco Polvere di Luna
"Moon Dust" white
Blanc poussière lunaire



CAT. Z_ Artù



ZE ZN ZC ZD



ZZ ZV ZM ZF

Composizione - Composition - Composition: vera pelle "pieno fiore" - real "full grained" - cuir véritable "plein fleur"
Peso - Weight - Poids: 870 gr/mq (UNI 5114)

Manutenzione e lavaggio - Cleaning and washing
Entretien et nettoyage

